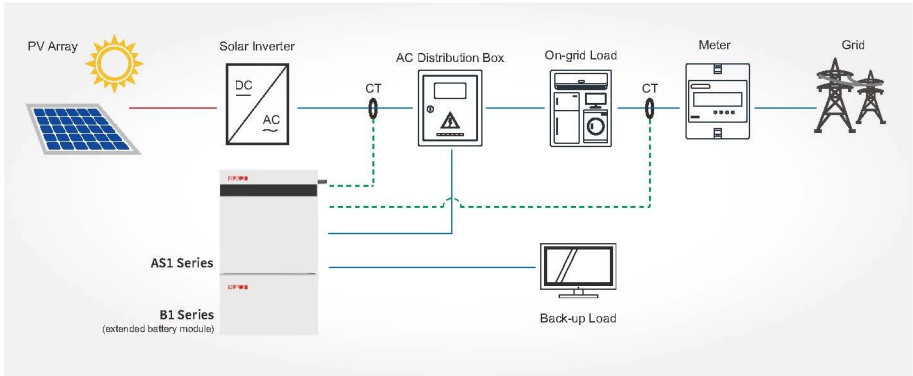


## AS1 AC Retrofit Battery System



### AS1-3KS-5.1 Datasheet

Type	AS1-3KS-5.1
<b>Battery Parameters</b>	
Battery Type	Lithium ion
Total Energy Capacity [Wh]	5120
Battery Capacity [Ah]	100
Rated Voltage [V]	51.2
Voltage range [V]	42~58.4
Depth Of Discharge [DOD]	≤90%
Cycle Life	≥6000
Max.Charge Current [A]	60
Max.Discharge Current [A]	60
Scalability	Yes ( up to 20.4KWh )
<b>Grid Parameters</b>	
Max.Continuable Output Power [VA]	3000
Max.Output Current [A]@230Vac	13.1
Rated Grid/Backup Voltage/Range [V]	220, 230, 240/180~280
Rated Grid/Backup Frequency/Range [Hz]	50, 60/±5
Power factor [cos φ]	0.8 leading ~0.8 lagging
Feed-in	L+N+PE
<b>AC Output [Back-up Mode]</b>	
Max. Continuable Output Power [VA]	3000
Output Voltage [V]	220/230/240
Max.Output Current [A]@230Vac	13.1
Output Frequency [Hz]	50/60
Max.Output Power [VA]	3600 ,10sec
<b>General Data</b>	
Communication Mode	Wi-Fi/4G/Ethernet (Optional)
Operating Temperature Range	0°C~50°C
Cooling Method	Natural Convection
Ambient Humidity	0-95% Non-condensing
Noise [dBA]	<29
Ingress Protection	IP65
Dimensions [H*W*D][mm]	738*650*186
Weight [kg]	60
Standard Warranty [Year]	5 (Standard) /10 (Optional)
Applicable Standard	AS 4777.2, VDE 4105, G98, C10/C11, CEI0-21, IEC62619, IEC62040